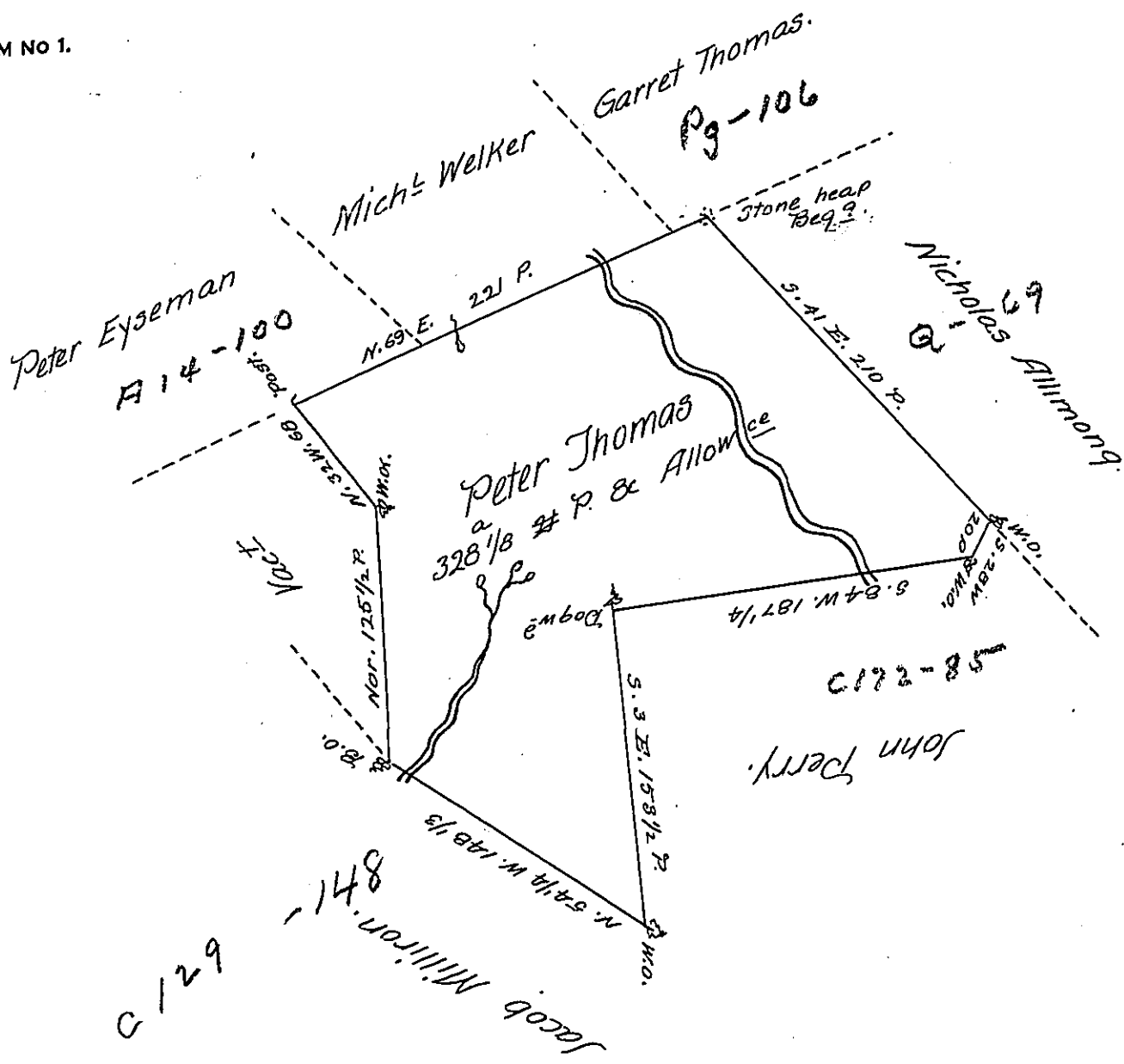


FORM NO 1.



A Draught of a Tract of Land situate in Hempfield Township in the County of Westmoreland Containing three hundred and twenty eight Acres and 21 Perches and the usual allowance &c<sup>o</sup> Surveyed November 4<sup>th</sup> 1784<sup>obl.</sup> pursuance of a Warrant granted to Peter Thomas bearing date the 24<sup>th</sup> day of August 1784.

In<sup>o</sup> Henderson, D.S.

23<sup>rd</sup>

To John Lukens, Esq<sup>r</sup>.  
Surveyor General.

IN TESTIMONY that the above is a copy of the original remaining on file in the Department of Internal Affairs of Pennsylvania, made conformably to an Act of Assembly approved the 16th day of February, 1833, I have hereunto set my Hand and caused the Seal of said Department to be affixed at Harrisburg, this fourteenth day of May 1907.

*Henry Howell*  
Secretary of Internal Affairs.